

DURATEC[®]-XP, PROMABOARD[®]



Technical calcium silicates

PROMABOARD[®] and DURATEC[®] are asbestos fibre free calcium silicate boards made in a density range from 1600 to 1800 kg/m³. These large-sized boards are ideally suited for replacing asbestos containing materials in all industrial applications.

DURATEC[®]-XP is a glass fibre reinforced calcium silicate which is non-brittle and electrically inert.

PROMABOARD[®] is a non-combustible board that can be used for applications where a good thermal resistance, high mechanical stability and electrical resistance are required.

Technical data		DURATEC [®] -XP	PROMABOARD [®]
Colour		white	grey
Classification temperature	°C	700	350
Bulk density	kg/m ³	1800	1600
Cold compressive strength	N/mm ²	185	75
Bending strength	N/mm ²	45	35
Linear shrinkage	%	700 °C - 12h: 0.5	350 °C - 12h: 0.5
Thermal conductivity			
200 °C	W/m K	0.38	0.43
400 °C	W/m K	0.34	-
600 °C	W/m K	0.32	-
Specific heat capacity	kJ/kg K	1.05	1.05
Reversible thermal expansion	K ⁻¹	6.6x10 ⁻⁶	8.5x10 ⁻⁶
Flatwise electrical strength	kV/m	180	170
Comparative tracking index	CTI value	600	600
Arc resistance stage 40	s	> 420	-
LOI	%	-	15

Delivery sizes		DURATEC [®] -XP	PROMABOARD [®]
Length	mm	1200	2520 / 2500 (edge-planed)
Width	mm	900	1240 / 1220 (edge-planed)
Thickness	mm	4 / 6 / 8 / 10 / 12 / 15 / 20 / 25 / 30 / 40 / 50	6 / 8 / 10 / 15 / 18

Other sizes are available on request.

Production tolerances		DURATEC [®] -XP	PROMABOARD [®]	
			(unedged sawn)	(edge-planed)
Length and width	mm	± 4.0	± 5.0	± 2.5
Thickness		± 1.0 mm	± 15.0 %	± 15.0 %

DURATEC[®]-XP, PROMABOARD[®]

Properties & advantages

- high mechanical strength
- high electrical and arc resistance
- high thermal and temperature resistance
- excellent machinability to close tolerances
- large format
- strong and durable
- dust free surface
- asbestos free

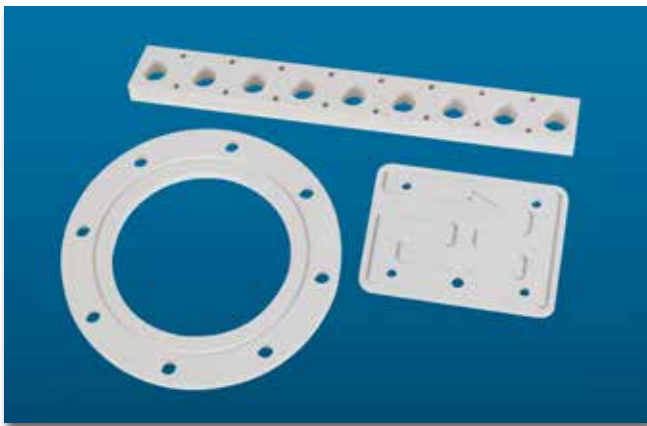
Application areas

HEAVY INDUSTRY

- induction furnace casings
- foundry core and blow plates, bottom boards
- reduction cell superstructure insulation
- customised shapes in electrical and thermal insulation components
- weld pads
- machine and apparatus construction where high strength and electrical/thermal insulation is needed
- oven walls/cladding
- replacement for asbestos containing boards

TRANSPORTATION

- arc chutes in switchgear



Working & processing

PROMABOARD[®] and DURATEC[®]-XP can be accurately machined with special processing machinery and appropriate tools for precision parts in machines and plants.

When cutting to size, the maximum workplace concentration values for inhalable dust must be observed. Dust extraction is recommended. See product safety information sheet.

Thermal conductivity

